



Drainage Grids

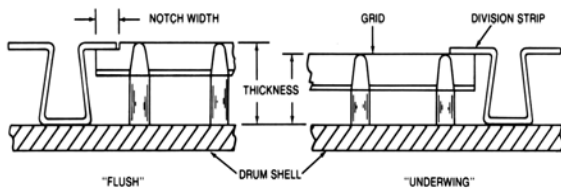
Compositech Drum Filter Drainage Grids are designed to offer a superior flow in most drum filter applications. Our Hi-Flow Drainage Grid features a wide-open drainage pattern providing optimal flow characteristics without sacrificing filter cloth support. Our grids have approximately 90% open area on the back of the cloth. With the tapered openings, the true open area of the grid is 65%, the highest in the industry! Compositech's Hi-Flow grids are the premier product for replacement of any O.E.M. drainage grid. Whether you operate an Eimco®, Dorr-Oliver®, Peterson, Ametek, Komline-Sanderson, Westech, or any other rotary drum filter, our Hi-Flow Drainage Grids are available for your filter.

Compositech drainage grids are high pressure injection molded from engineering grade resins to maximize part density and optimize the rigidity, impact resistance and temperature range within which the grids are capable of operating. This translates to greater service life and fewer service problems for our drum filter customers.

Our Hi-Flow Grids are available in standard size panels and have interlocking edges to insure continuous cloth support. We produce the grids in 1/2", 5/8", 3/4", 23/32", 13/16", 7/8", 1" and 1 1/4" thicknesses. The grids are ready for direct installation under the division strips or we can cut notches so they install flush with the division strips for scraper discharge filters. We precut and notch grids for our customers so the grids can simply be slipped into place. We also bond grids together to make larger panels. We have customers who use our grids bonded into panels up to 78" long. We bond on special sidebars to eliminate the build up of material under the division strips.

Compositech offers the only full line of grids and grid preparation services available to all drum filter users. Grids are in stock and can be cut to size, notched for flush installation or manufactured with full bar edges for maximum support under the division strips. Our grids are generally available for shipment within 48 hours of your order. Full un-cut grids in standard thicknesses are shipped the same day your order is placed.

Compositech manufactures filters and replacement parts for drum filters, disc savealls, horizontal belt filers and belt press filters. Please call us for solutions to your filtration problems!



INSTALLATION METHODS

Compositech

Physical Address:
4531 Main
Pearland, TX 77581

Mailing Address:
P.O. Box 2673
Pearland, TX 77588

Phone: 281-648-3557
Fax: 281-648-4515

Website: www.compositech-filters.com

Compositech
Filters
Customer Service, Superior Parts, Reliability